

Zaasijiwan Head Start



2022-2023 ANNUAL REPORT



Email: twolfe@ldftribe.com

Website:

www.ldftribe.com/departments/88/Education/Zaasijiwan_Head_Start.html

Tel: [715] 588-9291

Address: P.O. Box 67, 2899 Hwy. 47 S.

Lac du Flambeau, WI 54538

PROGRAM OVERVIEW

Lac du Flambeau Zaasijiwan Tribal Head Start is a longstanding community program with a mission to provide comprehensive services to young children and families. Head Start has been operating in the community for almost 60 years and Early Head Start has been in place for over 25 years. The program receives federal, tribal, and state funds and operates under the management and oversight of its Policy Council and the Lac du Flambeau Tribe.



Zaasijiwan means “it ripples” in the Ojibwe language. Our goal is to have a positive impact on the children and families we serve – a ripple effect so to speak!

Program Goals & Objectives

The 2022-23 school year coincided with the 2nd year of a 5 year project period for Zaasijiwan Head Start. Overarching program goals for 2022-23 are as follows:



Provide a high quality environment and facility that is responsive to and supportive of community needs.

- * Zaasijiwan Head Start continues progressing towards realization of its goals. The program supported community needs by prioritizing enrollment for families experiencing homelessness, foster care or kinship, low-income eligibility and other needs.



Improve the quality of educational services.

- * All classrooms are equipped with appropriate materials that support the curriculum. ZHS continues to work towards improvements related to classroom environments and facilities overall.
- * Education staff participate in regular observations to ensure curriculum fidelity, quality teacher-child interactions, promotion of social-emotional competency amongst students, and the development and implementation of culturally relevant supplemental curriculum.



Promote and increase parent and community involvement.

- * ZHS conducts interest surveys at the start of the school year to determine parent interests and responds by following up throughout the year to provide a variety of opportunities to participate in the program.



Strengthen and expand services with local and regional programs that assist Head Start and Early Head Start children and their families.

- * Staff also work to continually engage other community agencies in the development and maintenance of relationships and joint ventures to benefit program participants.



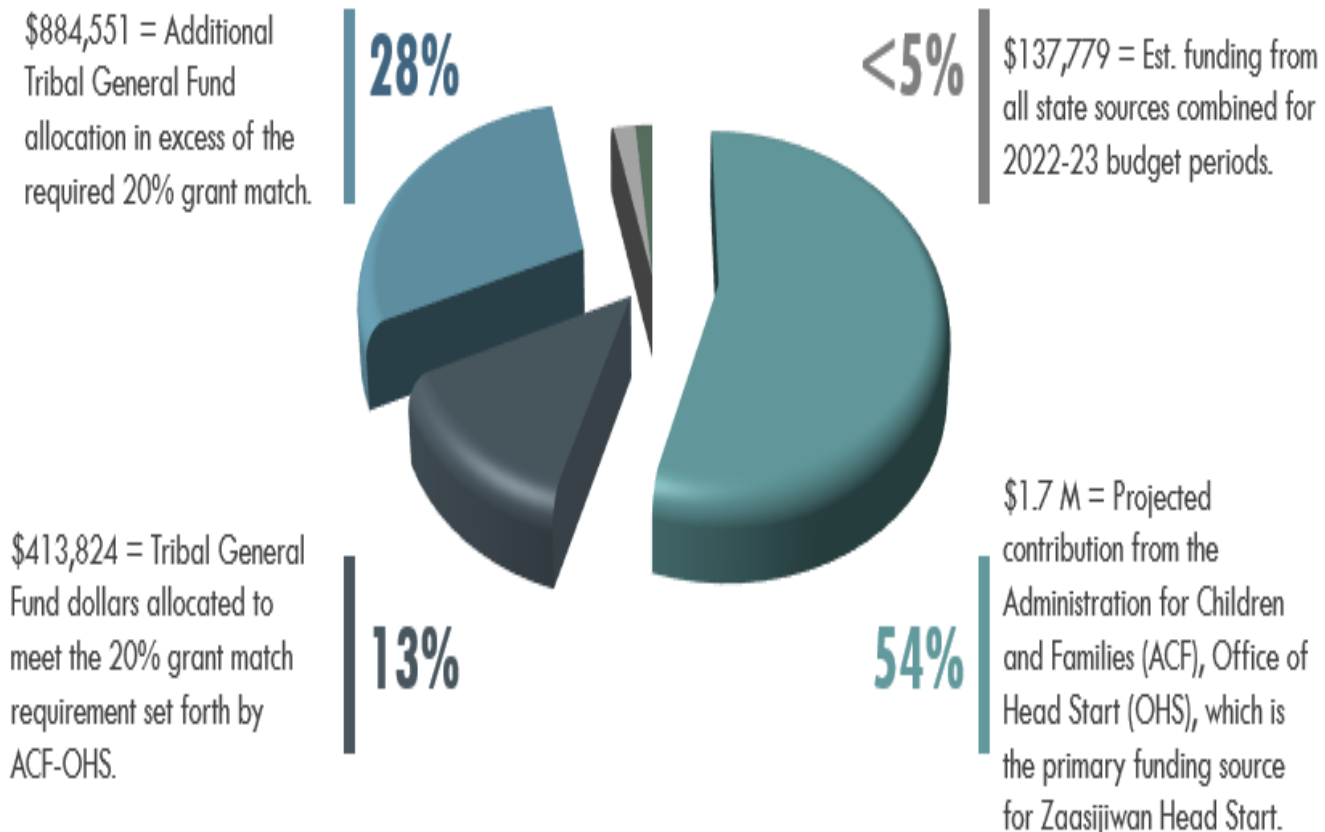


FINANCIAL SUMMARY

Zaasijiwan Tribal Head Start operates with a combination of federal, tribal, and state grants. Its primary funding sources are the Administration of Children and Families – Office of Head Start (ACF-OHS) and the Lac du Flambeau Band of Lake Superior Chippewa Indians, which makes significant contributions via matching funds and additional funding to support program operations. Other sources include the WI Head Start Supplemental Grant (WHSS), WI Preschool Development Grant Young Learners Tribal Language Revitalization (PDG-YLTR) and Child and Adult Care Food Program (CACFP) all of which are administered by the Wisconsin Department of Public Instruction as well as the Birth to Three program which is administered by the Wisconsin Department of Health Services.

The chart below shows ZHS funding sources and amounts.

ZHS 2022-23 PROPOSED FUNDING





2022-23 EXPENSES

Total expenditures varied from initial projections. Changes to cost categories were mainly due to unforeseen circumstances including temporary closures, staff vacancies and/or extended periods of absence which significantly impacted salary and fringe benefit costs.



ACF-OHS EXPENSES

81% of the funds received from the Administration for Children and Families – Office of Head Start were expensed in 2022-23. Funds were not expensed as projected primarily due to decreases in proposed salary and fringe benefit expenses. There was minimal variance among other expense categories. The program has requested an extension to re-budget and utilize unspent amounts.

GENERAL FUND EXPENSES

Tribal general funds allocated to the ZHS grant match were 82% expensed. Additional tribal expenditures were also less than projected due to staff vacancies impacting salaries, fringe benefits, and indirect costs.

“When disadvantaged children receive high-quality birth-to-five education, such as Early Head Start plus Head Start, the return on investment can be as high as 13% annually.”



Source: National Head Start Association Center for Policy, Data, and Research

WHSS EXPENSES

100% of funds received from the Wisconsin Department of Public Instruction: Head Start State Supplemental grant were expensed as proposed.

BIRTH TO THREE EXPENSES

89% of funds received from the Wisconsin Department of Public Instruction: Birth to Three grant were expensed. Actual expenses in the program services, supply, and travel/training categories were less than anticipated.

CACFP EXPENSES

100% of CACFP funds were utilized to support expenses related to food service operations. Line items include food and food service supplies.

PDG-YLTLR EXPENSES

77% of grant funds were utilized to support expenses related to curriculum development. The application and award were delayed which resulted in a shortened project period. Additional delays in contracting and hiring support staff to carry out objectives impacted actual expenses.

Enrollment

ZHS provides preschool and infant/toddler services using a combination of center-based and home-based programming. Center-based services are provided on-site in the classroom while home-based services are conducted via weekly in-home family visits.

In 2022-23 the program converted some of its Head Start slots to Early Head Start slots which essentially provided 1 less Head Start classroom of 14 students and 1 more Early Head Start classroom of 8 students. This resulted in 42 Head Start slots for children ages 3 to 5 and 53 Early Head Start slots for children 0 to 3.

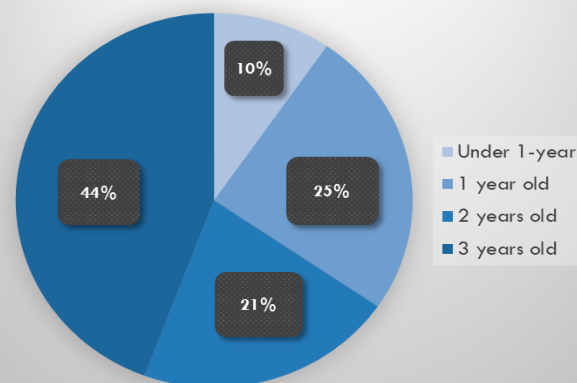
Head Start provided services in 3 center-based classrooms scheduled to operate for 7.5 hours per day, 4 days per week for 137 days. Early Head Start provided two program options for 0 to 3 year old children. 4 center-based classrooms for infants and toddlers operated for 8 hours per day, 5 days per week for 174 days. The remaining 21 Early Head Start participants receive home-based services which were in operation for 46 weeks.

Total cumulative enrollment for the 2022-23 school year was 105; with a total of 56 enrolled in EHS and 49 in HS.

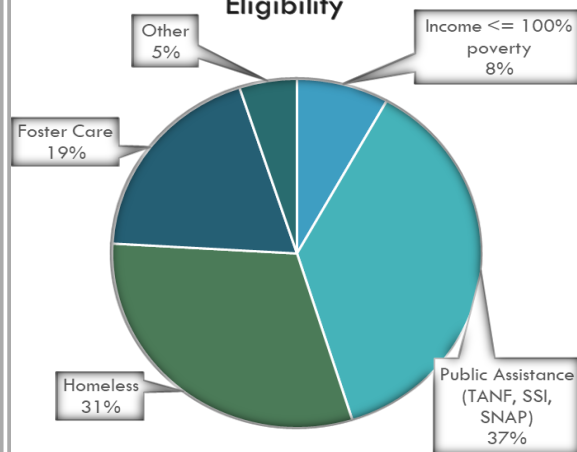
Family & Community Involvement

ZHS served a total of 97 families in 2022-23 and provided at least one family service for 49 families. Parent Committee and Policy Council Meetings were held on a regular basis to provide leadership and volunteer opportunities. Periodic education sessions for parents and caregivers focused on topics related to surveyed interest areas. Family socials were also provided to engage families and celebrate program learning activities.

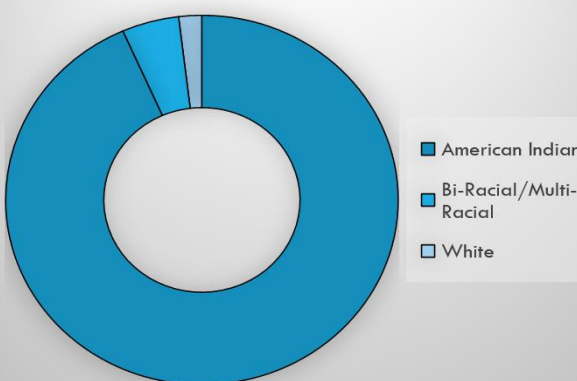
Ages of Children Served



Eligibility

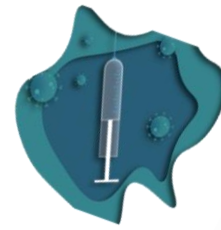


Race





Health Services



- 105 children had health coverage & access to care
- 75 children were up to date on all possible immunizations
- 105 students had accessible dental care



SCHOOL READINESS



ZHS's School Readiness Goals aim to ensure "All children make progress across all areas of development and learning, with at least 80% finishing at or above the widely held expectations." They align with the expectations of the Lac du Flambeau School District plus the Head Start Early Learning Outcomes Framework (HS-ELOF) and the Wisconsin Model Early Learning Standards (WMELS). Curriculum and assessment tools, Creative Curriculum & Teaching Strategies GOLD also align. The program involves parents/caregivers in the learning process providing 3 educational home visits & 2 conferences each school year and ongoing communication to keep families well informed.

LEARNING DOMAIN	BELOW EXPECTATIONS	MEETING EXPECTATIONS	EXCEEDING EXPECTATIONS
SOCIAL – EMOTIONAL	10.55%	61.67%	27.78%
PHYSICAL	2.78%	58.61%	38.61%
LANGUAGE	21.10%	55.84%	23.06%
COGNITIVE	13.05%	58.61%	28.34%
LITERACY	6.94%	69.45%	23.61%
MATHEMATICS	9.72%	69.45%	20.83%

PROGRAM MONITORING

2022-2023 Monitoring Reports

- 2022-23 marked year 2 of a 5-year project period complete. One review stemming from a reported incident involving a lapse in child supervision in January 2023 resulted in a noncompliance determination related to the following Program Performance Standards:
 - Safe Learning Environments [1302.90 (c)(1)(v)]

The program and its Policy Council and Governing body engaged in a consultation process with the Office of Head Start to develop a corrective action and implementation plan. Corrective action measures for each noncompliance finding listed have since been implemented. Some of the actions included staff training and professional development activities, development of an ongoing observation system to monitor safety and supervision in the classrooms, and policy/procedure revisions to set expectations and provide for enforcement when necessary.

- The program was last included in the tribe's 2022 annual audit, conducted by independent auditing firm, WIPFLI. The following is a summary of the opinion received:



Independent Auditor's Report

Honorable Tribal Council
Lac du Flambeau Band of Lake Superior Chippewa Indians
Lac du Flambeau, Wisconsin

Report on the Audit of the Financial Statements

Opinion

We have audited the accompanying financial statements of the Grants and Contracts Fund, a fund of the Lac du Flambeau Band of Lake Superior Chippewa Indians, (the "Tribe"), as of and for the year ended September 30, 2022, and the related notes to the financial statements, which collectively comprise the Tribe's basic financial statements as listed in the table of contents.

In our opinion, the accompanying financial statements referred to above present fairly, in all material respects, the respective financial position of the Grants and Contracts Fund as of September 30, 2022, and respective changes in financial position for the year then ended in accordance with accounting principles generally accepted in the United States of America (GAAP).